

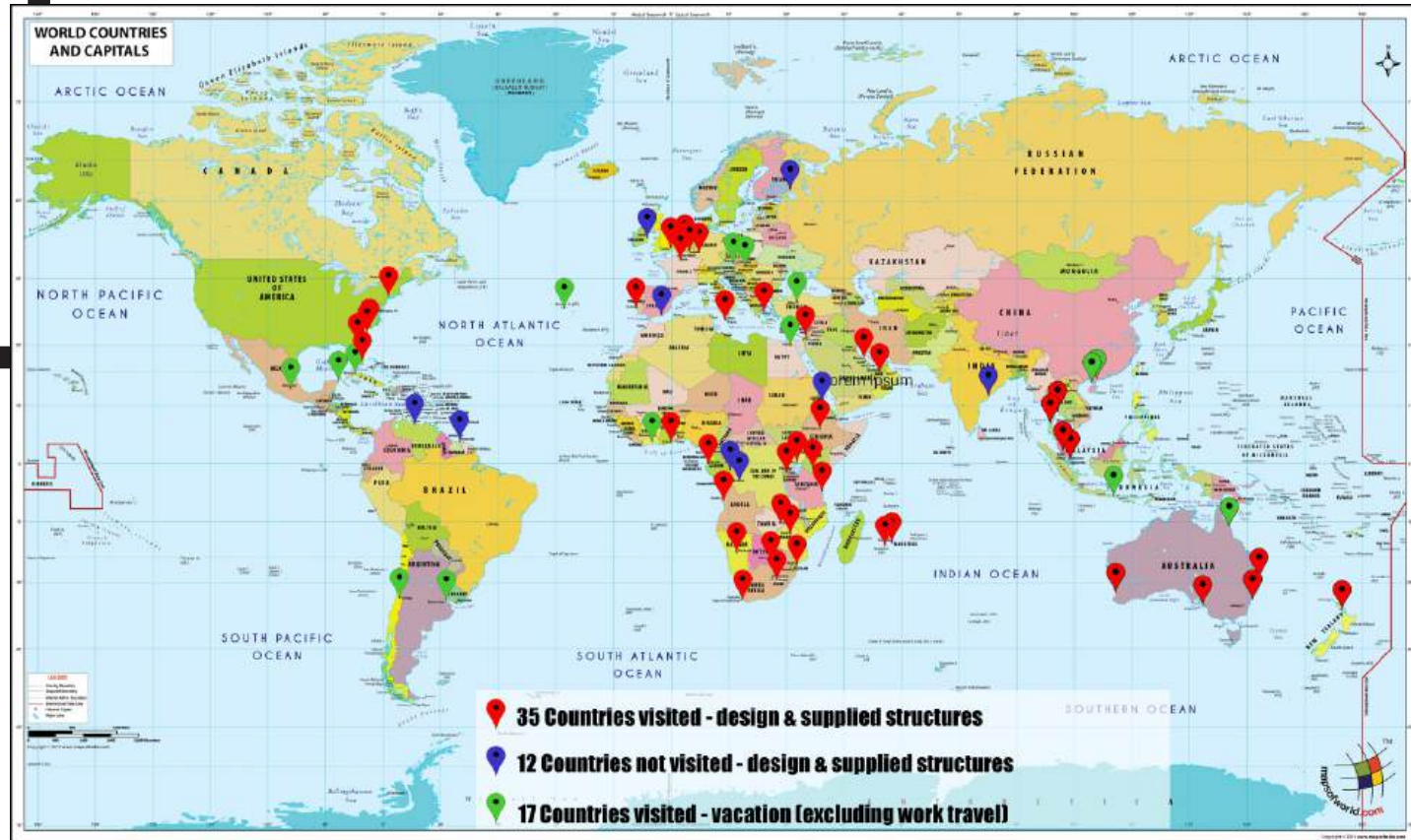


**IDT** Custom Awnings

**IDT** Custom Awnings

**2024 by the numbers**

- 32 years experience
- 1 000's of projects
- 10 000's of structures
- 47 countries
- 88 standard designs
- 10 000's of engineering & design hours



A fashion show runway in a modern lounge. Three women are walking on a black and white striped runway. The woman on the left is wearing a black dress with a yellow cape. The woman in the middle is wearing a white two-piece outfit with a long white skirt. The woman on the right is wearing a white two-piece outfit with a long white skirt and a large necklace. The background shows a lounge area with people sitting at tables and a large screen displaying a video. The text "BRINGING GREAT DESIGNS TO LIFE" is overlaid in the center of the image.

BRINGING  
GREAT DESIGNS  
TO LIFE



**OUTDOOR  
&  
INDOOR**

## IDT Custom Awnings

IDT Custom Awnings has a large range of standard Tensile Wind Rated design (over 88 designs) to suite most individual requirements for shade and rain protection in the domestic market, hospitality & commercial markets.

IDT Custom Awnings over the past 32 years has developed a great deal of expertise in the design, manufacture & installation of custom tensile wind rated structures.

Our in-house project engineers have a wealth of experience in the design and development of custom designs for extreme high wind areas as well as the South African Standards. We use only the highest quality imported and locally produced fabrics.

Marine Grade Stainless Steel rigging and fixtures.



## FINDING YOU IN EVERY DETAIL

When deciding on the perfect product for your needs there are a number of criteria that need to be taken into account.

Amongst these is whether the structure needs to be waterproof or just for sun protection. Must the structure be water proof to the building. What is the life expectancy you require out of the membrane. Will you be adding drop down or glass around the structure in the future.



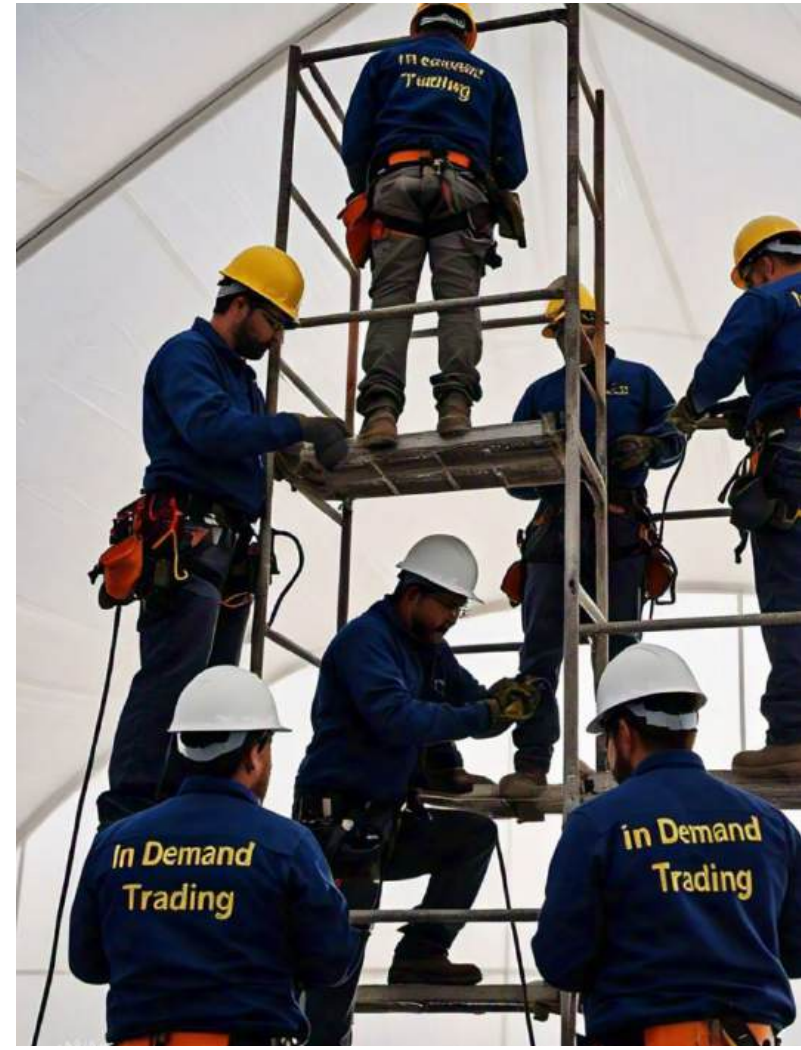
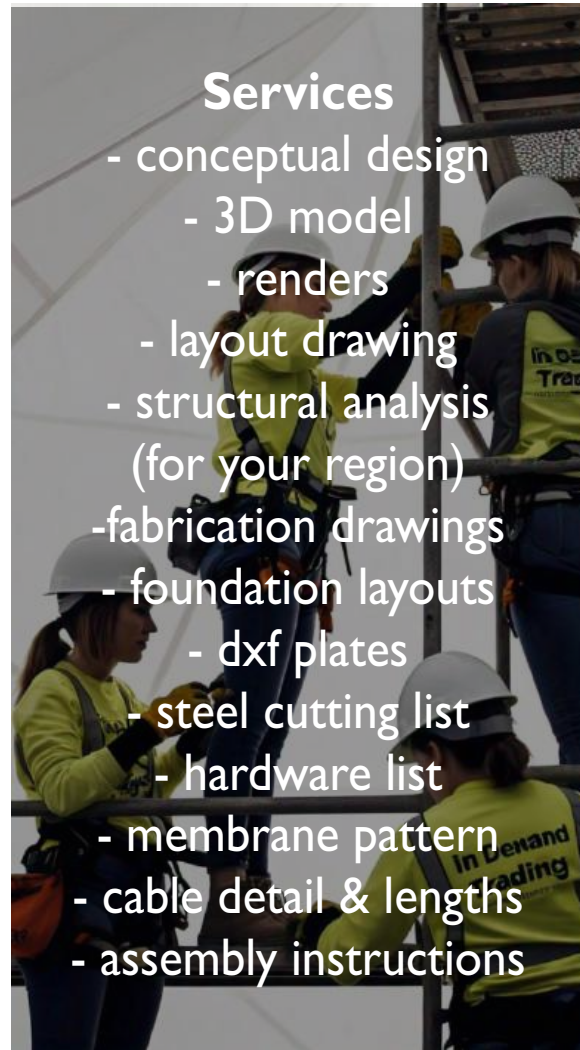
Function of the structure to provide shade or rain protection. What weather conditions can we expect & what weather conditions need to be taken into account in the design.



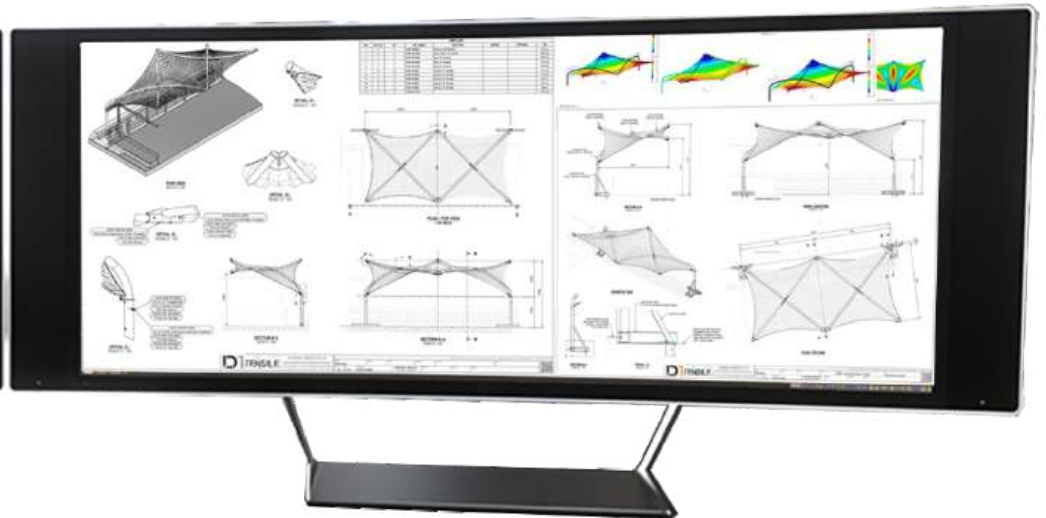
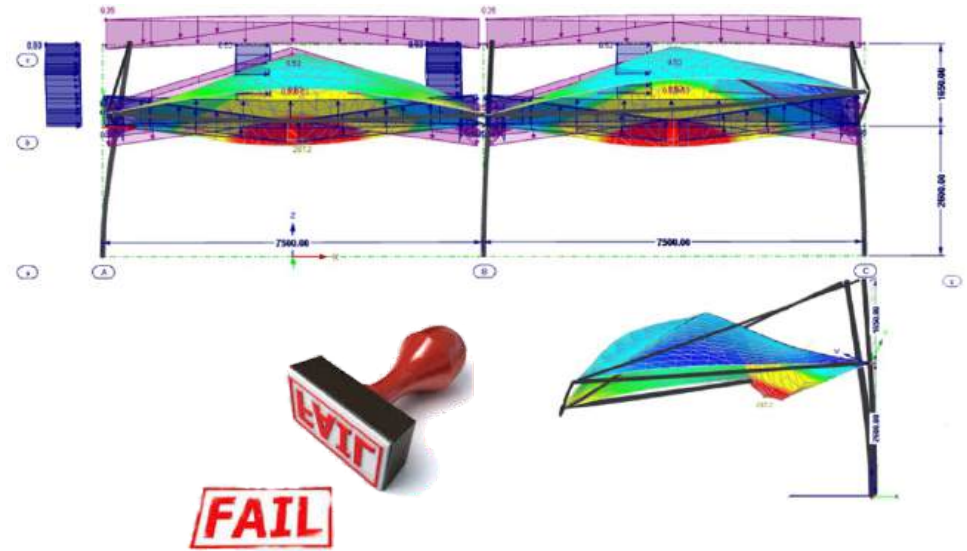
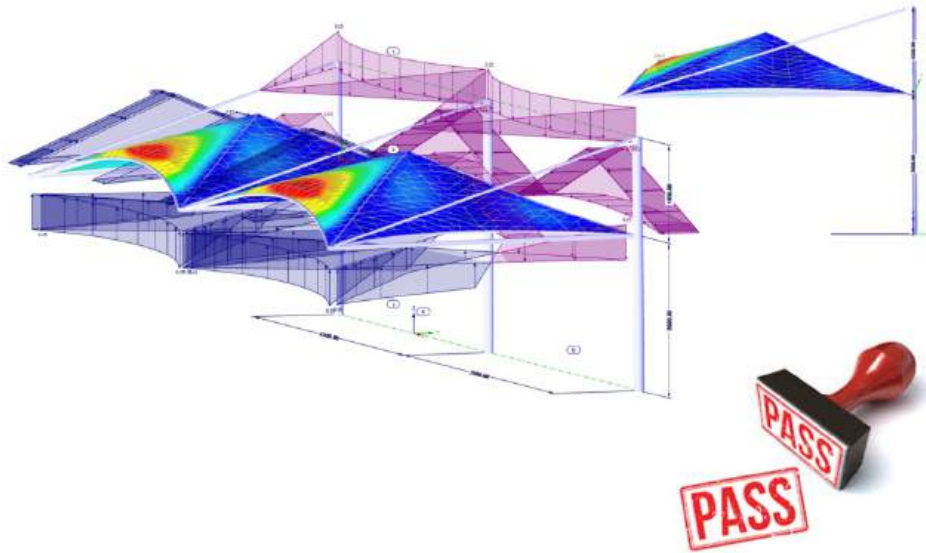
Preferred design. There are many designs that we can offer in both standard and bespoke designs. We work with you to determine the best fit for your requirements.



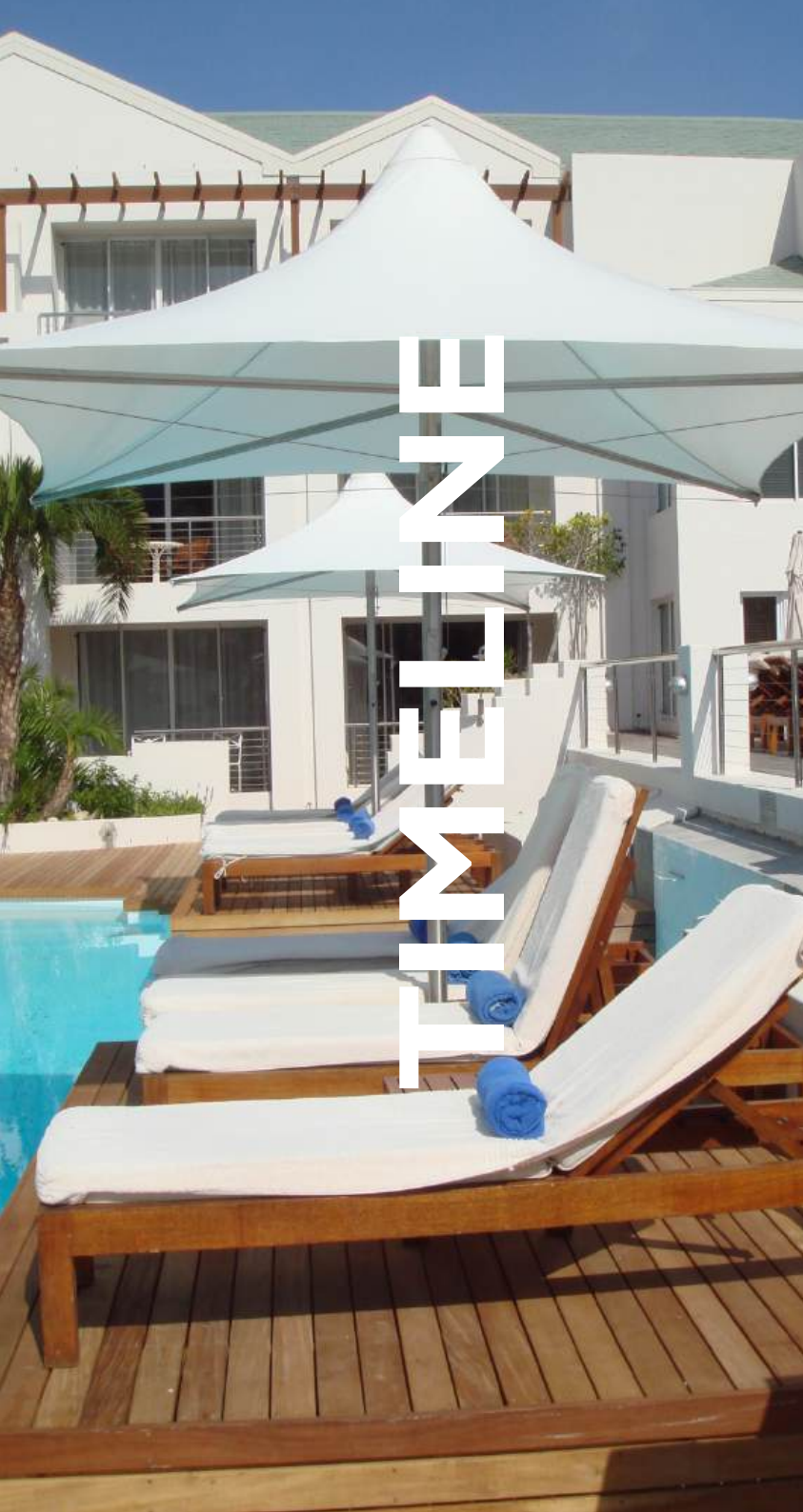
Do you require an engineers sign off on the project or do you just require the structural analysis report that we routinely offer to our clients for each project we undertake.



**INSIST ON A STRUCTURAL ANALYSIS**



**LET US DESIGN YOU NEXT...**



# MEMBRANE

## DESIGN



In general the design process takes about 7 working days. This includes the layout drawings, renders and membrane patterns.

## ANALYSIS



Structural analysis is conducted by country and by region in accordance with the required wind load codes of the region. This process can take up to a week depending on the complexity of the design.

**FABRICATION**

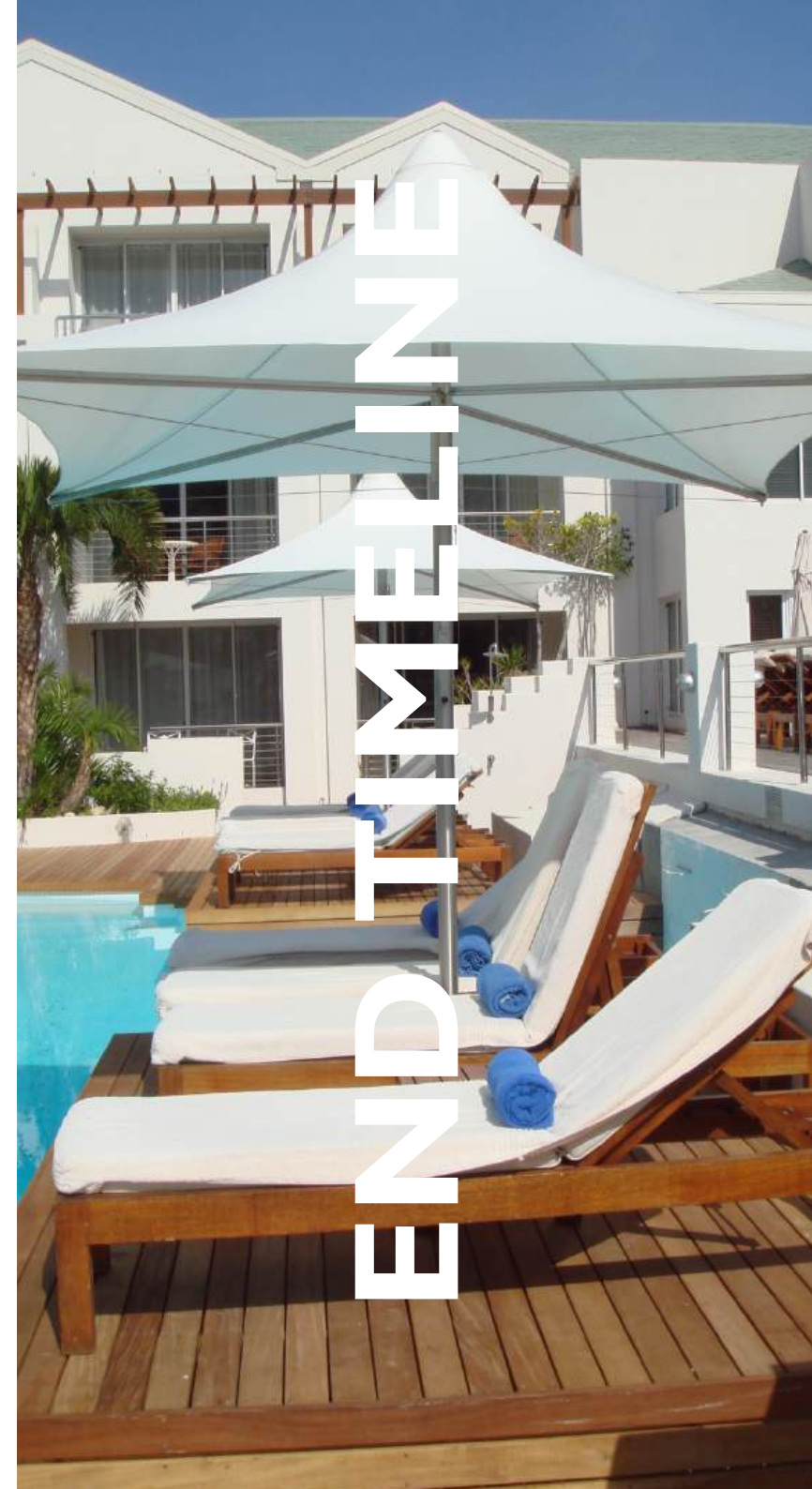


Fabrication process takes about 4-6 weeks. This will includes the costing, procurement, receipt of materials, fabrication & coating.


**INSTALLATION**



The time on site is totally dependant on the complexity of the structure. Site visits are normally broken up into foundations and the instalation of the actual structure.



END TIMELINE



**Transforming Spaces**  
through innovative  
designs

## 1 Waterproof

Architectural PVC is available in different thicknesses. The thicker the fabric the longer the lifespan. We recommend Serge Ferrari & Verseidag for architectural PVC structures.



## 2 Shade

There are many shade cloth suppliers around the world. Knittex Z25 colour shade, & Knittex Extreme 32 shade cloth are our shade cloth of choice.



**IDT** Custom Awnings

# TENSILE ARCHITECTURAL PVC





**TENSILE WIND  
RATED UMBRELLAS**



Tensile Sail Structures are light weight structures that are aesthetically pleasing and fit into almost any environment.

They can be waterproof or just for shade.



**TENSILE SAIL**

TENSILE SAILS



**TENSILE SAILS**





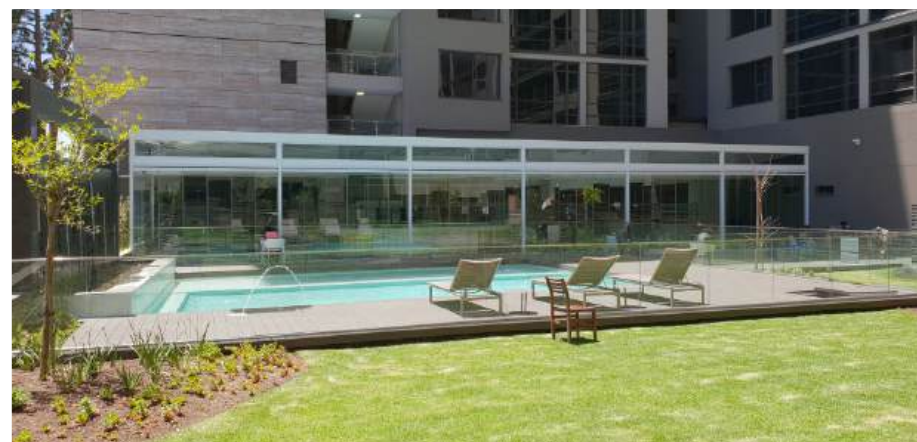
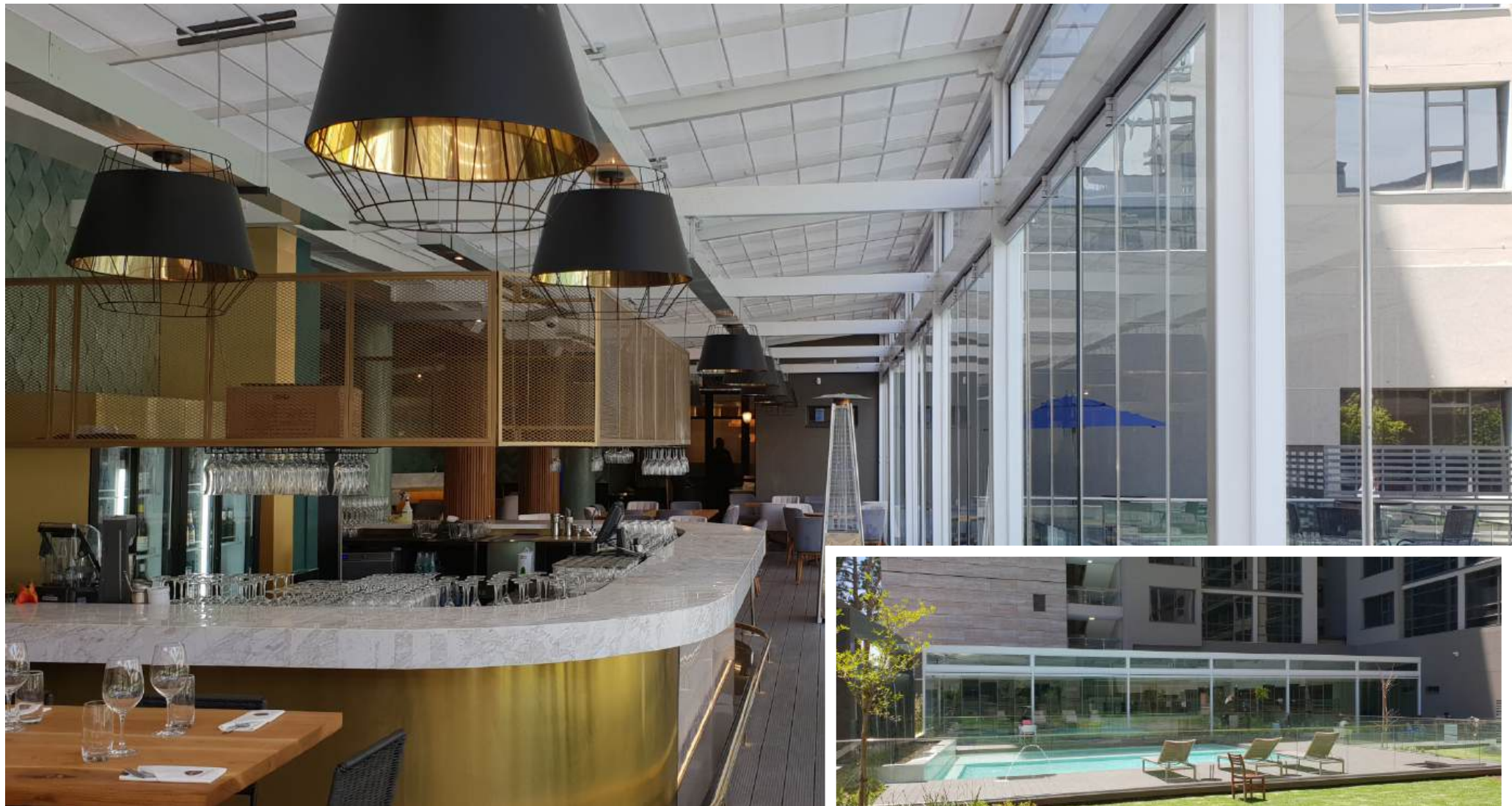
Tensile Enclosure are designs to allow for a fully waterproof foot print and offer protection against all weather conditions



## **TENSILE ENCLOSURES**



tensile enclosure



tensile enclosure



tensile enclosure





Cantilever Bird



Cantilever Bird



Dual Cantilever Bird



Walkway



Tensile Barrel



Channel Edge



Bespoke Design

**IDT** Custom Awnings



Tensile Tulip



Tensile Outrigger



Cantilever HTWRU



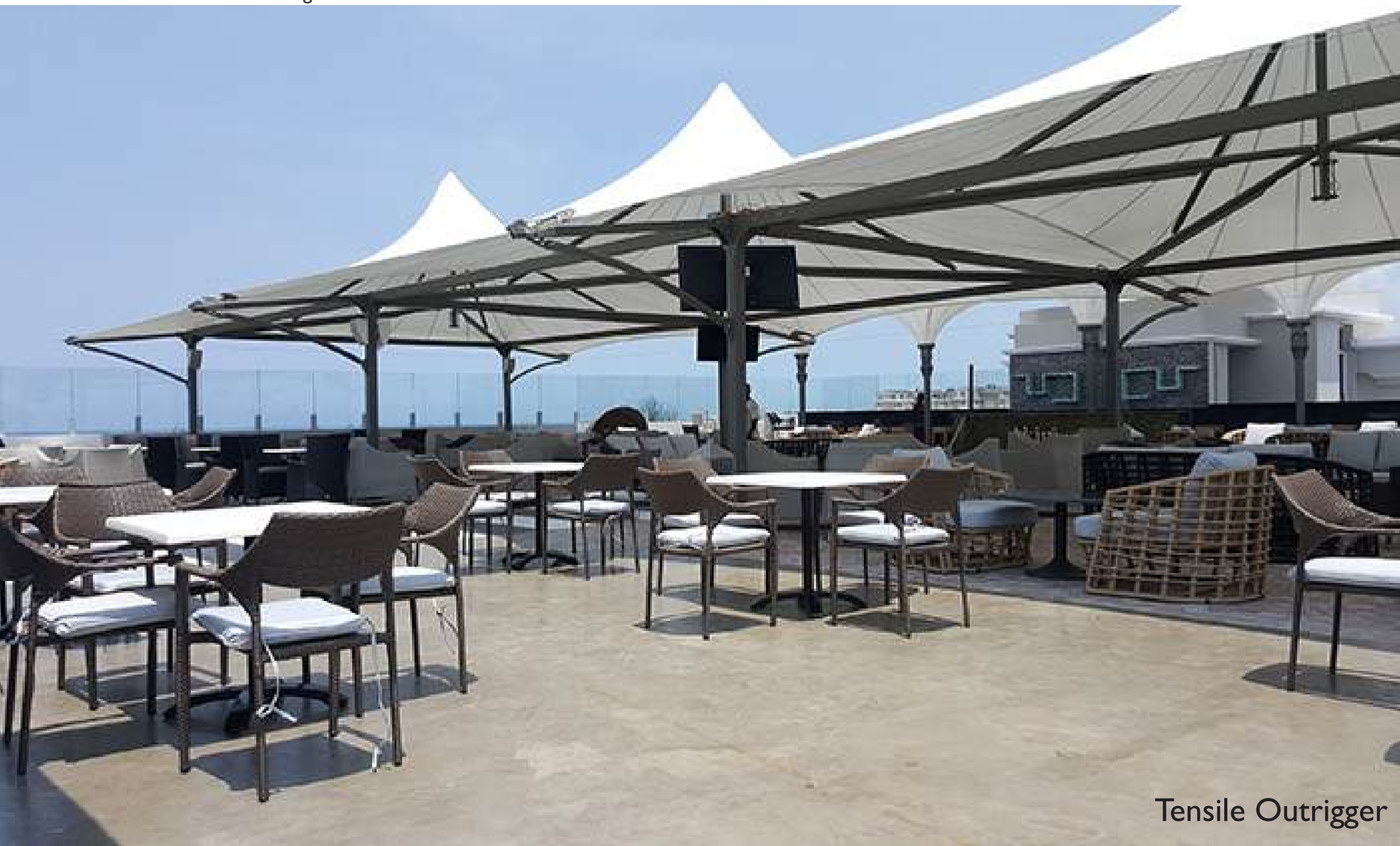
Concord



Tensile Awning



Pergola





## LIGHTING



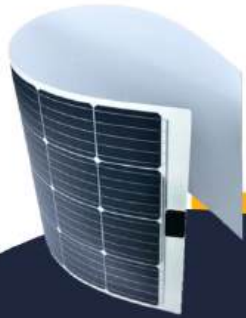


innovative solar products  
parking areas hospitality  
hotels coffee shops  
restaurants carport









# The Future of Shadeports...

Flexible Solar Panels  
480 watts per panel  
1.8mm thick  
9 kgs per panel



**IDT** Custom Awnings

# TENSILE THERMOFLEX

Thermoflex structures are waterproof and offer both sun and rain protection. Due to the stretch nature of the fabric Thermoflex structures are simple to design and easy to install.



**THERMOFLEX**



**IDT** Custom Awnings

# **RAMPANT ARCH**

A Rampant Arch structure offers protection against all the elements. Rampant Arch Structures are made with light steel frames and architectural pvc.



**RAMPANT ARCH**







**IDT** Custom Awnings

# ARCHITECTURAL SHADE CLOTH



Stadium Seating

**IDT** Custom Awnings

shadeports



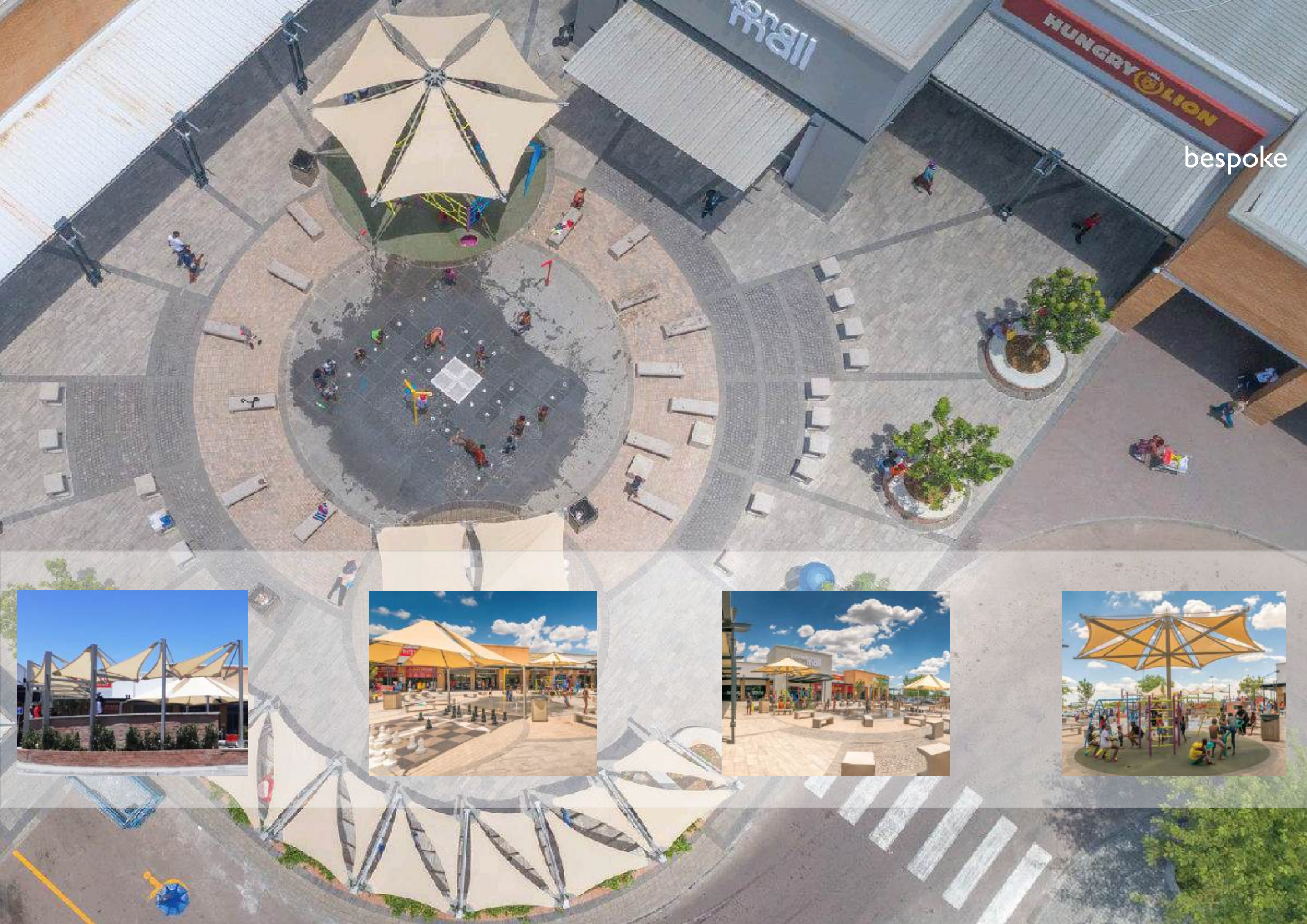


# IDT Custom Awnings

## Centre Post Hypar







bespoke



Shade Sun Saddle











# ROOF TOP STRUCTURES

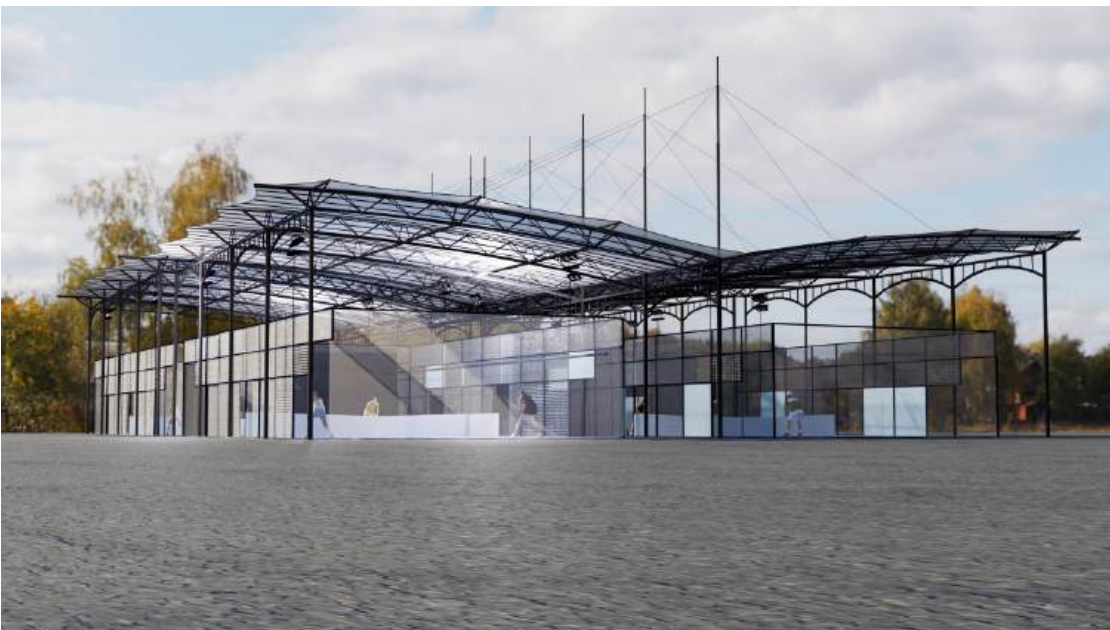


# IDT Custom Awnings



Tensile Rooftop







# Newlands Cricket Ground



# JOINT VENTURES

**IDT** Custom Awnings



**RAK** Structures



**IDT** Custom Awnings

**RAK** Structures



**IDT** Custom Awnings

**RAK** Structures



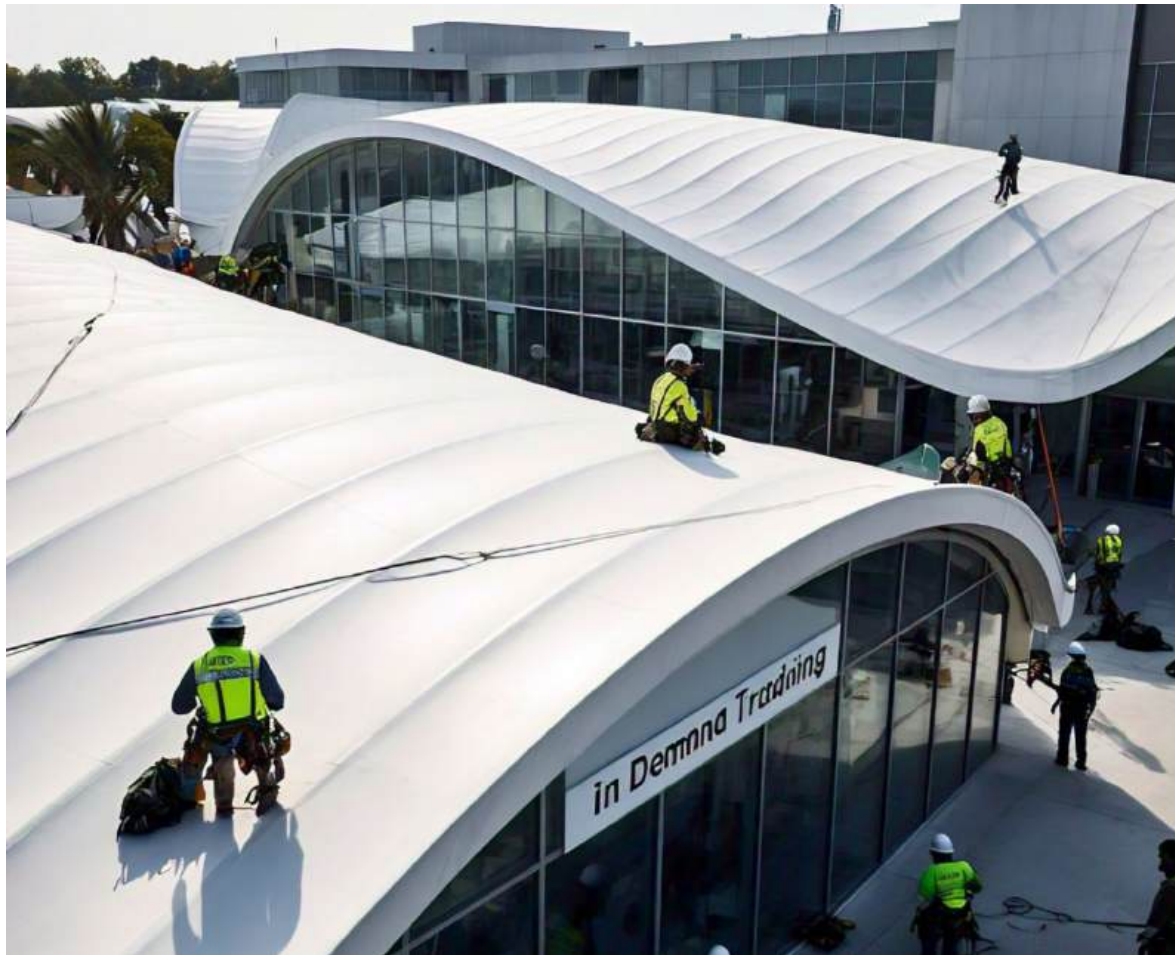


**IDT** Custom Awnings

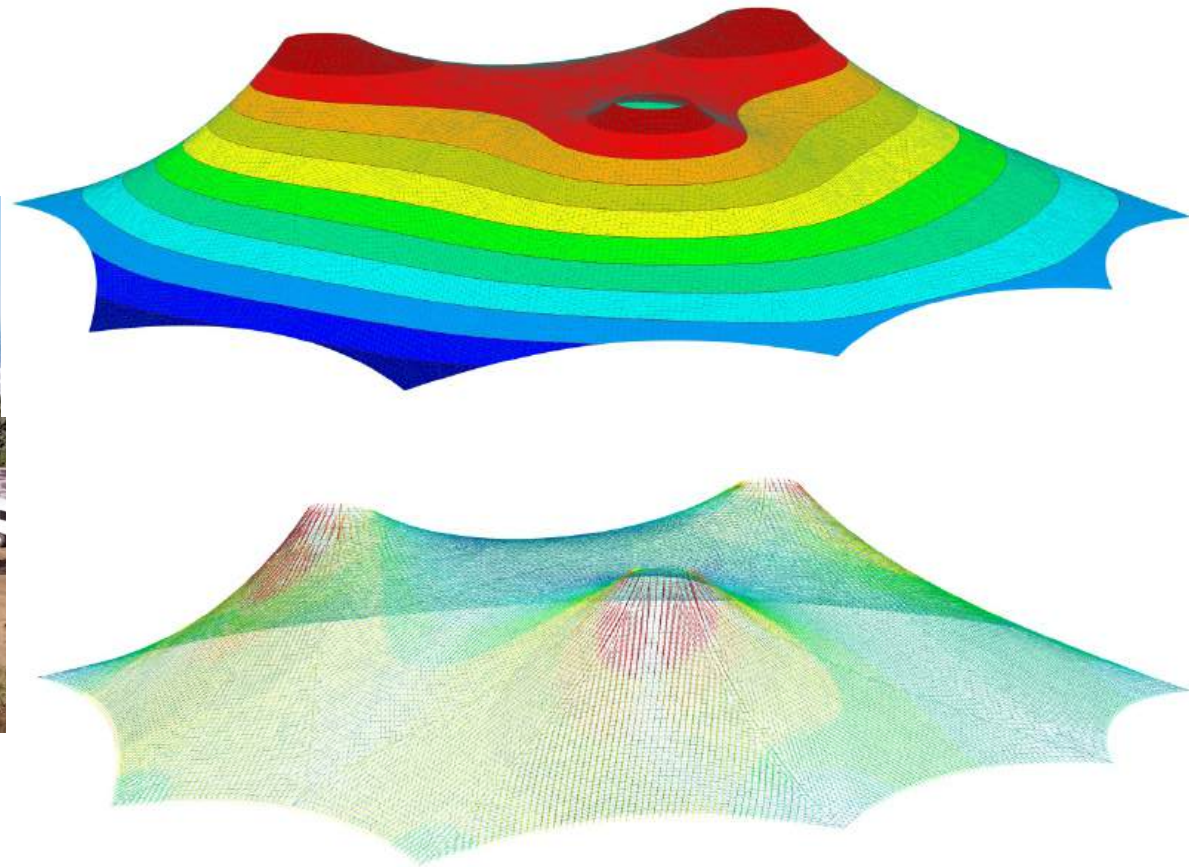
# GROUP OF COMPANIES



Conceptual  
Design

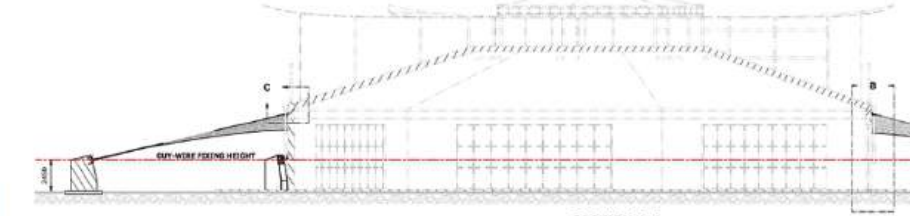
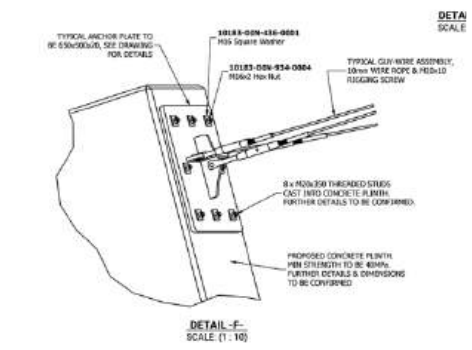
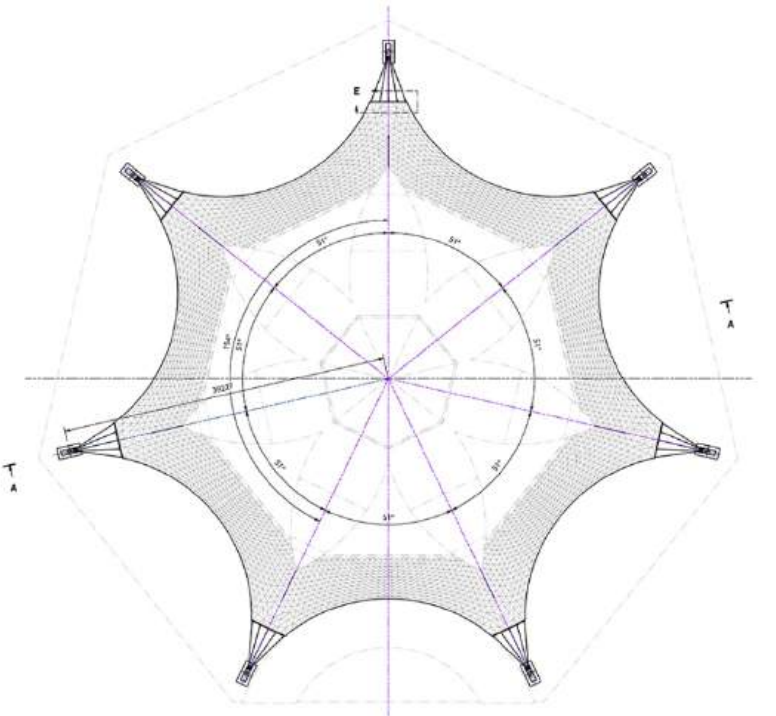
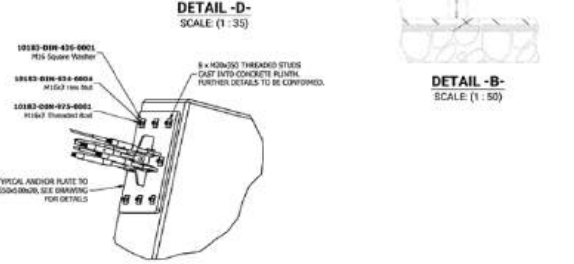
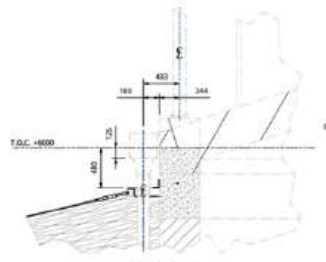
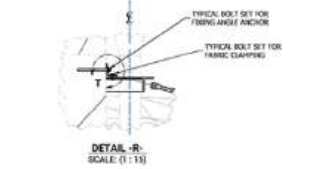
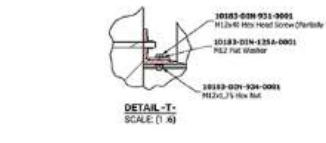
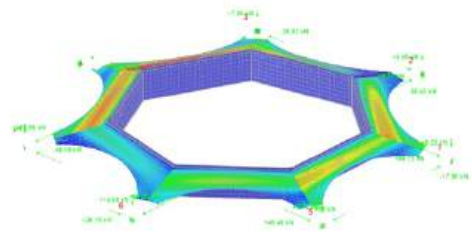
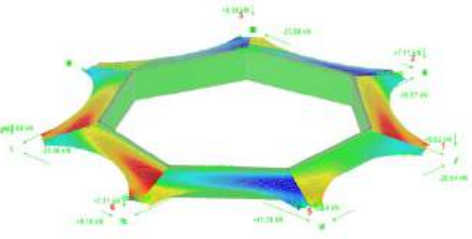
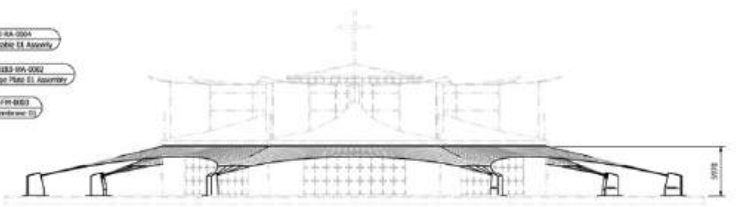
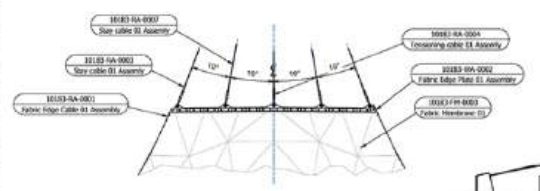


I 562 sqm triple peak WIP



Structural Analysis  
& membrane  
patterning

NO	QTY	UNIT	REF	PAGE NUMBER	PARTY LIST	DESCRIPTION	UNIT PRICE	AMOUNT	TOTAL
1	1	EA	10183-001-0001	10183-001-0001	10183-001-0001	10183-001-0001	10183-001-0001	10183-001-0001	10183-001-0001
2	1	EA	10183-001-0002	10183-001-0002	10183-001-0002	10183-001-0002	10183-001-0002	10183-001-0002	10183-001-0002
3	1	EA	10183-001-0003	10183-001-0003	10183-001-0003	10183-001-0003	10183-001-0003	10183-001-0003	10183-001-0003
4	1	EA	10183-001-0004	10183-001-0004	10183-001-0004	10183-001-0004	10183-001-0004	10183-001-0004	10183-001-0004
5	1	EA	10183-001-0005	10183-001-0005	10183-001-0005	10183-001-0005	10183-001-0005	10183-001-0005	10183-001-0005
6	1	EA	10183-001-0006	10183-001-0006	10183-001-0006	10183-001-0006	10183-001-0006	10183-001-0006	10183-001-0006
7	1	EA	10183-001-0007	10183-001-0007	10183-001-0007	10183-001-0007	10183-001-0007	10183-001-0007	10183-001-0007
8	1	EA	10183-001-0008	10183-001-0008	10183-001-0008	10183-001-0008	10183-001-0008	10183-001-0008	10183-001-0008
9	1	EA	10183-001-0009	10183-001-0009	10183-001-0009	10183-001-0009	10183-001-0009	10183-001-0009	10183-001-0009
10	1	EA	10183-001-0010	10183-001-0010	10183-001-0010	10183-001-0010	10183-001-0010	10183-001-0010	10183-001-0010
11	1	EA	10183-001-0011	10183-001-0011	10183-001-0011	10183-001-0011	10183-001-0011	10183-001-0011	10183-001-0011
12	1	EA	10183-001-0012	10183-001-0012	10183-001-0012	10183-001-0012	10183-001-0012	10183-001-0012	10183-001-0012
13	1	EA	10183-001-0013	10183-001-0013	10183-001-0013	10183-001-0013	10183-001-0013	10183-001-0013	10183-001-0013
14	1	EA	10183-001-0014	10183-001-0014	10183-001-0014	10183-001-0014	10183-001-0014	10183-001-0014	10183-001-0014
15	1	EA	10183-001-0015	10183-001-0015	10183-001-0015	10183-001-0015	10183-001-0015	10183-001-0015	10183-001-0015
16	1	EA	10183-001-0016	10183-001-0016	10183-001-0016	10183-001-0016	10183-001-0016	10183-001-0016	10183-001-0016
17	1	EA	10183-001-0017	10183-001-0017	10183-001-0017	10183-001-0017	10183-001-0017	10183-001-0017	10183-001-0017
18	1	EA	10183-001-0018	10183-001-0018	10183-001-0018	10183-001-0018	10183-001-0018	10183-001-0018	10183-001-0018
19	1	EA	10183-001-0019	10183-001-0019	10183-001-0019	10183-001-0019	10183-001-0019	10183-001-0019	10183-001-0019
20	1	EA	10183-001-0020	10183-001-0020	10183-001-0020	10183-001-0020	10183-001-0020	10183-001-0020	10183-001-0020



**ISSUED FOR COMMENTS**

**GENERAL NOTES:**

1. DRAWING TO BE USED IN ALL CONTRACTS UNLESS NOTED OTHERWISE.
2. ALL DIMENSIONS ARE IN MILLIMETERS UNLESS NOTED OTHERWISE.
3. ALL DIMENSIONS ARE TO FACE UNLESS NOTED OTHERWISE.
4. ALL DIMENSIONS ARE TO FACE UNLESS NOTED OTHERWISE.
5. ALL DIMENSIONS ARE TO FACE UNLESS NOTED OTHERWISE.
6. ALL DIMENSIONS ARE TO FACE UNLESS NOTED OTHERWISE.
7. ALL DIMENSIONS ARE TO FACE UNLESS NOTED OTHERWISE.
8. ALL DIMENSIONS ARE TO FACE UNLESS NOTED OTHERWISE.
9. ALL DIMENSIONS ARE TO FACE UNLESS NOTED OTHERWISE.
10. ALL DIMENSIONS ARE TO FACE UNLESS NOTED OTHERWISE.

**CONSTRUCTION NOTES:**

1. ALL DIMENSIONS ARE TO FACE UNLESS NOTED OTHERWISE.
2. ALL DIMENSIONS ARE TO FACE UNLESS NOTED OTHERWISE.
3. ALL DIMENSIONS ARE TO FACE UNLESS NOTED OTHERWISE.
4. ALL DIMENSIONS ARE TO FACE UNLESS NOTED OTHERWISE.
5. ALL DIMENSIONS ARE TO FACE UNLESS NOTED OTHERWISE.
6. ALL DIMENSIONS ARE TO FACE UNLESS NOTED OTHERWISE.
7. ALL DIMENSIONS ARE TO FACE UNLESS NOTED OTHERWISE.
8. ALL DIMENSIONS ARE TO FACE UNLESS NOTED OTHERWISE.
9. ALL DIMENSIONS ARE TO FACE UNLESS NOTED OTHERWISE.
10. ALL DIMENSIONS ARE TO FACE UNLESS NOTED OTHERWISE.

**SURFACE TREATMENT & COATINGS:**

1. ALL DIMENSIONS ARE TO FACE UNLESS NOTED OTHERWISE.
2. ALL DIMENSIONS ARE TO FACE UNLESS NOTED OTHERWISE.
3. ALL DIMENSIONS ARE TO FACE UNLESS NOTED OTHERWISE.
4. ALL DIMENSIONS ARE TO FACE UNLESS NOTED OTHERWISE.
5. ALL DIMENSIONS ARE TO FACE UNLESS NOTED OTHERWISE.
6. ALL DIMENSIONS ARE TO FACE UNLESS NOTED OTHERWISE.
7. ALL DIMENSIONS ARE TO FACE UNLESS NOTED OTHERWISE.
8. ALL DIMENSIONS ARE TO FACE UNLESS NOTED OTHERWISE.
9. ALL DIMENSIONS ARE TO FACE UNLESS NOTED OTHERWISE.
10. ALL DIMENSIONS ARE TO FACE UNLESS NOTED OTHERWISE.

Manufacturing drawings & detailing



**IDT** Custom Awnings

Savanna Luxury Tents & Habitats





# TENSILE MAINTENANCE CONTRACT

- annual maintenance contract
- preferential emergency call out
- bi annual membrane clean
- pre-emptive maintenance
- up to 30% off recovers
- up to 30% off repairs
- post visit report

call now for a free  
quotation

t: 011 791 1888

e: [sales@indemandtrading.co.za](mailto:sales@indemandtrading.co.za)



**IDT** Custom Awnings

# COMMERCIAL PRODUCTS

Solaris Solar Umbrella





canvas commercial



**idtcustomawnings.com**  
**sales@idtcustomawnings.com**  
**+27 (0)11 791 1888**



click icon  
selected  
to launch